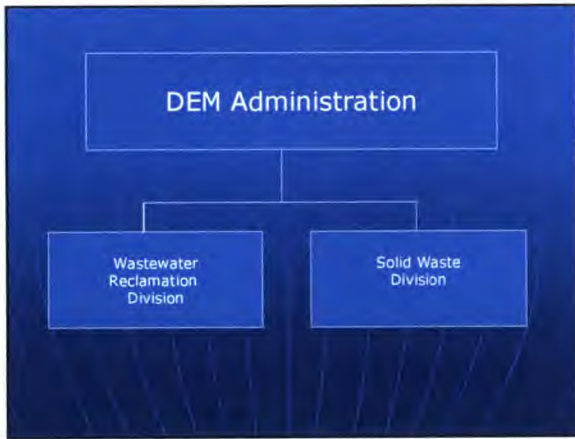




County of Maui
Department of Environmental
Management

Maui County Council
Infrastructure Management Committee
February 14, 2011



Wastewater Reclamation
Division

*Recd. 2/14/2011 Infrastructure Management Committee (IM-11(A))
from Director of Environmental Management*

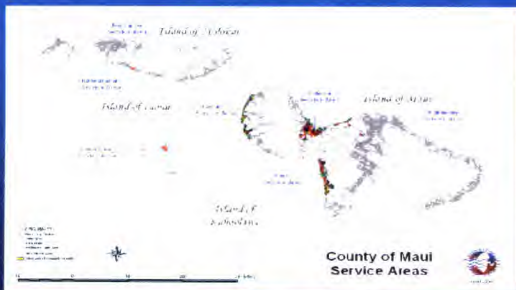
“Global” Performance Measures

- Increase reliability of existing facilities
- Expand sewer system to non-sewered areas
- Increase volume of reclaimed water
- Improve quality of treated effluent

Where does my sewage go?

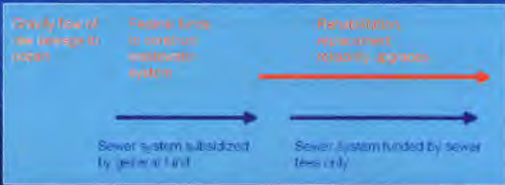


County of Maui Service Areas Map



Funding History

1960 1970 1980 1990 2000 2010 2020



Wastewater Reclamation Division System Reliability

YEARS	WASTEWATER PROCESSED (gallons)	WASTEWATER SPILLED (gallons)	RELIABILITY	EQUIVALENT ANNUAL "DOWN-TIME"
1992-1994	14,965,881,000	6,358,000	99.9575 %	3 hours 43 minutes
2003-2005	15,859,597,000	352,868	99.9978 %	12 minutes

WWRD Current Efforts


- Increase system reliability
- Explore expansion of reuse
 - Central Maui Recycled Water Verification Study 2010
 - Central Maui Recycled Water Verification Study 2009

Solid Waste Division



Refuse Collection

- Number of customers: 25,000
 - Manual: 3,900
 - Automated: 20,100



Refuse Collection

- Monthly Fee \$18
 - Actual Cost of Service \$40
-
- General Fund \$22

Landfill Program


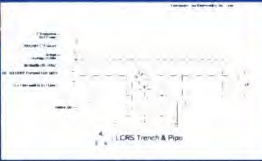


Landfill	Average Daily Tons	Remaining Life (years)
Central Maui Phase V	450	10
Phase VI	n/a	9
Hana	4	88
Molokai	12	5
Lanai	8	28



Central Maui Landfill



Central Maui Landfill

Central Maui Landfill

Flare

Gas Collection System
Well head and Distribution Line

Recycling

- Recycling Centers (8)
- E-cycling – computers, TVs, copiers
 - FY2010: 446 tons recycled
 - 122 computers given away
- White Goods – Hammerhead Metals
 - Refrigerators, ovens, water heaters, washers and dryers, dishwashers
 - Average / month processed: 1200
 - Cost per unit: Revenue \$1 / non-freon
Cost \$18/ freon item

Abandoned Vehicles

- Average / month processed: 90 cars
- Revenue per vehicle: \$25 / car
- Processing Contractor:
Hammerhead Metals

SWD Current Efforts

- Implementation of the Integrated Solid Waste Management Plan
- Increased Diversion
 - Curbside Recycling Pilot Program
- Gas to Energy Utilization
 - Use of Methane Generated by the Landfill

Questions?
